



25th Annual

Emergency Management Higher Education Symposium

Connecting Our Past with Our Future: Celebrating
Community Impact Over 25 Years

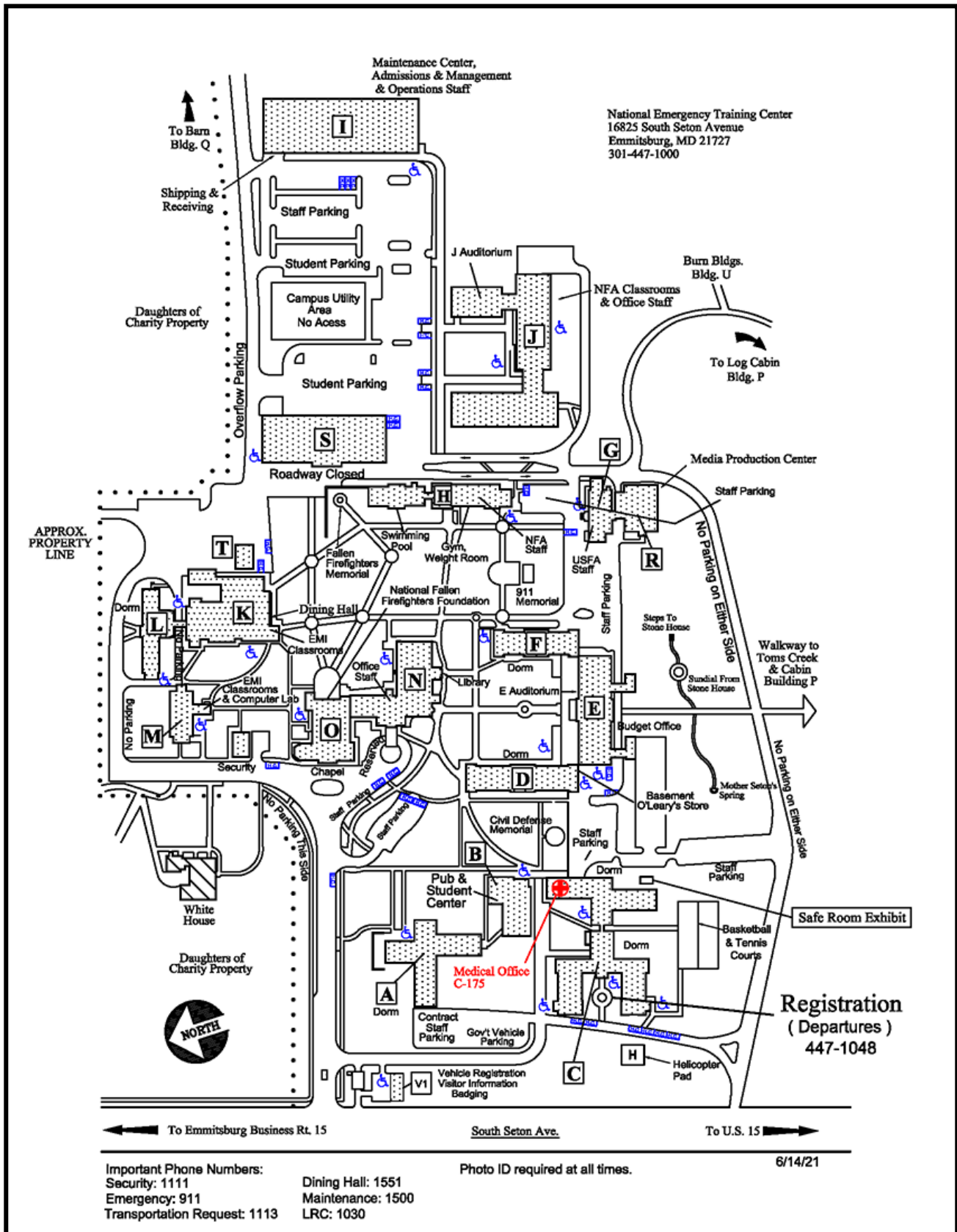
June 5 – 7, 2023



FEMA

#FEMAHiEd

Campus Map



Program Welcome

Welcome to FEMA's 25th Annual Emergency Management (EM) Higher Education (HiEd) Symposium! This year's theme "**Connecting Our Past with Our Future: Celebrating Community Impact Over 25 Years,**" celebrates the founding voices of Emergency Management Higher Education who brought us the first Symposium 25 years ago. It acknowledges the hard work and dedication of the academic community that has led to immense growth in Emergency Management programs, innovative research, and students. Connecting with our past is a reflection upon the rich history and scholarship of the Emergency Management discipline that has provided a strong foundation to build from. Furthermore, the theme calls us to envision a future practice of Emergency Management made stronger by students educated in cultural competence and prepared for the demands of an emerging and evolving threat landscape, including the threat posed by climate change.

In the spirit of this theme, the FEMA HiEd Program has brought together top researchers, faculty from multiple disciplines, Emergency Management practitioners, students, and FEMA staff to share knowledge through workshops, presentations, and panel discussions. We encourage academics, practitioners, and students to use this week as an opportunity to connect with each other, and hope that the content this week will inspire and inform the next 25 years of Emergency Management education and research.

Thank you,
The FEMA Higher Education (HiEd) Team
National Training and Education Division (NTED)



Please fill out daily evaluations for each session you have attended using the QR code below. Expect to receive an email on Friday with an overall Symposium evaluation survey.

All feedback is greatly appreciated!

surveymonkey.com/r/2023HiEdSymposium_Daily



Share your photos from the HiEd Symposium on social media!

#FEMAHiEd



L100 will be an open work space all week.

Save the Date
June 3-5, 2024

In Appreciation

Symposium Planning Academic Co-Lead

Dr. Ray Chang, Embry-Riddle Aeronautical University

Thank you to the Symposium Planning Academic Co-lead, Dr. Ray Chang. Ray's insight was invaluable, and the HiEd Program is grateful for his continued partnership.

Symposium Planning Committee

Thank you to the members of the Symposium Planning Committee who partnered with the HiEd team over the past year to coordinate the 2023 Symposium! FEMA's 25th Annual Emergency Management Higher Education Symposium would not have been possible without support from the Academic Planning Committee. The Planning Committee includes: Aaron Kenneston, Adrian Self, Alison Shuler, Ashley Davis, Brittany Giles-Jones, Ceeon Smith, Claire Knox, Damon Coppola, David McEntire, David Hogg, Dawn McLin, Debbie Fletcher, Dedrick Jackson, Diego Otegui, Gail Brekke, Goulda Downer, Jamie Stacy, Jean-Wilner Alexandre, Jerry Murphy, Joseph Richmond, Josh DeVincenzo, Katherine Janoski, Katja Abegg, Kelly Ryan, Kesley Richardson, Kevin Kupietz, Latisha Nixon-Jones, Laura Phipps, Linda Kiltz, Lucia Velotti, MacGregor Stephenson, Maria Burns, Nick LaLone, Oluponmile Olonilua, Paula Buchanan, Peggy Contreras, Sally Ziolkowski, Sandy Smith, Stephanie Mizrahi, Steve Carter, Steve Recca, Terry Cooper, and Tim Sevison.



Academic Peer Review Panel

This year, the HiEd team outsourced the call for submissions and peer review process to members of the academic community. Thank you to the lead, Dr. Nicolas LaLone, as well as all of the lead reviewers who were chosen for each track: Dr. Claire Knox (Scholarship of Teaching and Learning "SoTL"); Dr. Laura Phipps (Bringing Research into Practice); Stephen Carter (Policy and Administration); Diego Otegui (Inclusion, Diversity, Equity, and Access "IDEA"); and Dr. Lucia Velotti (Posters). These leaders recruited additional reviewers as necessary to complete the double-blind peer review process. The content for the Symposium tracks reflects their work.

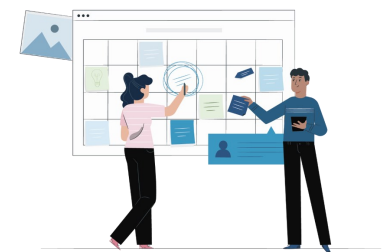


Center for Homeland Defense and Security (CHDS)

Thank you to Steve Recca, Director of the University and Agency Partnership Program (UAPP), and the team at CHDS at the Naval Postgraduate School for their expertise and support, including Morgan James, Evaluations Lead.

NETC Librarian, Caroline Hassler, and all NETC Campus Staff

A huge thank you to all of the NETC staff for their time and commitment to providing valuable resources to our community.



Student Volunteers

Thank you to all of the student volunteers who help make the Symposium run smoothly: Alethia Raycrow-Simpson, Aniya Martin, Brittany Giles-Jones, Devki Shah, Emily Heard, Emma Sharpe, Gabriel Pena, Hannah Healy, Hilary Betley, Jacqueline Orban, Jamela Green, Jennifer Classen, Jewel Lester, Jodi Ricks, Matthew Van, Natasha Edwards, Ryon Lee, Sarah Meeks, Sebastian Grajales Castano, Sophia Taur, Yvette Manduhano, Yvonne Dadson, and Vegas Curry.

The Higher Education Program

FEMA's Higher Education (HiEd) Program, managed by the National Training and Education Division (NTED), leverages partnerships across FEMA, DHS, and the academic community to advance Emergency Management and related fields. The HiEd Program fosters a culture of continuous learning and innovation by supporting Emergency Management faculty, students, and practitioners.

Research

The HiEd Program annually funds competitive multi-disciplinary applied research that examines real-world complex problems and provides actionable recommendations to advance the discipline of Emergency Management. In FY22, 11 projects were funded, which will be presented this week.

Special Interest Groups (SIGs):

(<https://training.fema.gov/hiedu/specialinterest/sig.aspx>)

SIGs support the exchange of knowledge in specific areas and applications of Emergency Management Higher Education. Groups are made of five or more members, who meet at least twice a year, with preferably two members who commit to serve as leads.

Anyone interested in joining a SIG should reach out to the associated SIG lead(s) on the website above.

College List

(<https://training.fema.gov/hiedu/collegelist/>)

The College List is a database of Higher Education programs at all levels of study in Emergency Management, Homeland Security, and related fields.

If you are interested in adding your program(s), email:
fema-emi-collegelist@fema.dhs.gov

29

years of service since 1994

280

More than
accredited Higher Ed institutions

600

More than
EM and HS college list programs



Contact the HiEd Team

fema-hied@fema.dhs.gov
(<https://training.fema.gov/hiedu/>)

Guest Speakers

In order of appearance



Chief Tonya Hoover

Deputy Administrator, U.S. Fire Administration

Tonya Hoover is currently serving in the role of Deputy Fire Administrator at the United States Fire Administration (USFA). As the senior career Federal fire official, she is responsible for the day-to-day operation of the USFA. This includes the annual training of more than 100,000 first responders at and through the National Fire Academy (NFA); the National Fire Incident Reporting System, which documents and analyzes 27 million fire department emergency responses a year; the USFA's fire prevention, public information, and public education programs; and the 26 campus buildings and the grounds of the historic National Emergency Training Center (NETC) in Emmitsburg, Maryland. [Her full bio is available at: fema.gov/profile/tonya-hoover.](https://www.fema.gov/profile/tonya-hoover)



Kelly Fitzgerald

Higher Education Program Manager

Kelly Fitzgerald is a dedicated public servant with more than 10 years of experience in education and training. She is passionate about creating knowledge-sharing ecosystems that strengthen community resilience. In her current role as the HiEd Program Manager at FEMA, she works to bridge Emergency Management research and practice through engagement with faculty, students, and practitioners. Previously, she was a Training Specialist at FEMA's Emergency Management Institute (EMI), where she applied her adult learning expertise to training development. Before coming to FEMA, she was a Peace Corps Volunteer in China, where she taught English Education at Hexi University.



Marcus Coleman

Director, DHS Center for Faith-Based and Neighborhood Partnerships

Marcus Coleman currently serves as the Director of the DHS Center for Faith-Based and Neighborhood Partnerships (DHS Partnerships Center), one of several centers of the [White House Office of Faith-Based & Neighborhood Partnerships](https://www.whitehouse.gov/briefing-room/presidential-actions/2021/02/14/executive-order-on-the-establishment-of-the-white-house-office-of-faith-based-and-neighborhood-partnerships/) (<https://www.whitehouse.gov/briefing-room/presidential-actions/2021/02/14/executive-order-on-the-establishment-of-the-white-house-office-of-faith-based-and-neighborhood-partnerships/>). Originally from Tucson, Arizona, Marcus has served at the intersection of building public private partnerships with faith-based and non-profit organizations for more than 15 years. [His full bio is available at: https://www.fema.gov/profile/marcus-t-coleman-jr](https://www.fema.gov/profile/marcus-t-coleman-jr)



Dr. Jeffrey Stern

Superintendent, Emergency Management Institute, FEMA RSL

Dr. Jeff Stern is the Superintendent of the Emergency Management Institute (EMI) in Emmitsburg, Maryland. He previously led the Virginia Department of Emergency Management, where he was responsible for disaster and Homeland Security (HS) preparedness, mitigation, response, and recovery efforts across the Commonwealth. [His full bio is available at: https://www.fema.gov/profile/jeffrey-d-stern-phd](https://www.fema.gov/profile/jeffrey-d-stern-phd)



Deanne Criswell

FEMA Administrator

Ms. Deanne Criswell was unanimously confirmed by the Senate as the 12th Administrator of FEMA and is the first woman confirmed to serve as the Administrator, where she leads the Nation's efforts in helping people before, during, and after disasters. She brings with her an extensive career in public service, with serving 30 years at all levels of government. [Her full bio is available at: https://www.fema.gov/profile/deanne-criswell](https://www.fema.gov/profile/deanne-criswell)

Guest Speakers

In order of appearance



Sheri Bone

Principal Deputy Director, Office of Economic Impact and Diversity, Department of Energy, U.S. Department of Energy

Sheri Bone is the Principal Deputy Director of the Office of Economic Impact and Diversity (ED) at the U.S. Department of Energy (DOE). Prior to joining ED, she served as a Division Director in the National Nuclear Security Administration's Cost Estimating and Program Evaluation Office, as well as the Director of Mission Support for Defense Nuclear Security, where she developed DOE's *National Strategic Plan for the Management of Nuclear Materials*. She also established and spearheaded the launch of the Mark-18A Target Material Recovery Program, to recover and preserve rare/valuable materials critical to U.S. national security programs, as well as medical, industrial, commercial, and academic efforts in the United States and abroad.



Charlotte Porter, MPH

Director, National Training and Education Division

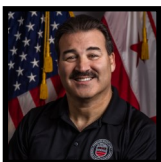
Charlotte Porter currently serves as the Director of FEMA's National Training and Education Division (NTED)– home of the HiEd Program. She has served in various roles across FEMA including NPD's Senior Liaison for Regional Engagement and Field Operations, the Deputy Director of the Individual and Community Preparedness Division, and the Director of the Office of the National Advisory Council. She has been deployed numerous times, most recently as the Director of FEMA's Hub of Philanthropic Engagement in Puerto Rico following Hurricane Maria. She holds a BA in Sociology from Clark University and an MPH in International Health from Loma Linda University.



Dr. DeeDee Bennett Gayle

University at Albany, State University of New York

Dr. Bennett Gayle's research interests include Emergency Management, socially vulnerable populations during disasters, emergency communications, disaster policy, and mobile wireless communications. She broadly examines the influence and integration of advanced technologies on the practice of Emergency Management, and for use by vulnerable populations. She has secured several research grants from the National Science Foundation and DHS. She received her PhD from Oklahoma State University in Fire and Emergency Management and received both her MS in Public Policy and BS in Electrical Engineering from the Georgia Institute of Technology.



Charles Guddemi

DC Homeland Security and Emergency Management Agency

Charles Guddemi is the District of Columbia's Homeland Security and Emergency Management Agency's (HSEMA) Statewide Interoperability Coordinator. He is responsible for coordinating interoperability and communications projects involving voice, data, and video. He is involved in numerous roles within the Emergency Management community. He joined HSEMA after a 25-year career with the United States Park Police, where he achieved the rank of Deputy Chief serving as the Commander of the Services Division. His professional memberships include ASIS International, IACP, FLEOA, and the FBI National Academy Association. He holds a BA in Psychology from the State University of New York at Albany and is a graduate of the 237th session of the FBI National Academy.

Guest Speakers

In order of appearance



Cathy Clark

IAEM-USA President, Business Continuity Director, Minnesota Department of Public Safety

Cathy Clark is currently the Business Continuity Director at the Minnesota Department of Public Safety (MN-DPS). Previously, she served as the Deputy Director and Statewide Interoperability Coordinator at the Minnesota Department of Public Safety's Division of Emergency Communication Networks. She previously led the Organizational Development Branch within the MN-DPS Division of Homeland Security and Emergency Management, where she was responsible to ensure coordination of the agency's emergency response plan and lead the evacuation traffic management project. In addition to her 33 years of state service and serving as a Public Affairs Coordinator, she is a member of the Minnesota Association of Emergency Managers and the International Association of Emergency Managers (IAEM).



Amanda Smith

Branch Chief, National Training and Education Division

Amanda Smith is currently the Chief of the National Training and Education System Branch in FEMA's National Training and Education Division, where she oversees analysis and evaluation of NTED's annual investment in a portfolio of over 275 training courses, in addition to the FEMA Higher Education Program. Previously, she was a Section Chief in FEMA's National Preparedness Assessment Division, and served as the Acting Branch Chief of NPAD's Assessments and Analytics Branch. Prior to joining FEMA as a Policy Analyst, she spent eight years at the Department of Health and Human Services, where she was a Presidential Management Fellow and had been a lead for pandemic influenza policy and planning in the Office of the Assistant Secretary for Preparedness and Response. She earned her Master's in Public Health from The George Washington University in Washington, DC.



Traci Silas

Executive Director, DHS Office of Academic Engagement

Traci Silas currently serves as the Executive Director of the Department of Homeland Security's Office of Academic Engagement, Office of Partnership and Engagement. There, she leads engagements among the Higher Education community, including 2-year, 4-year, trade, military, technical, agricultural, tribal, faith, and similarly situated academic institutions. [Her full bio is available at: dhs.gov/academicoverview.](https://dhs.gov/academicoverview)



Dr. Kay Goss, CEM

World Disaster Management, LLC

Dr. Kay Goss is the President of World Disaster Management, LLC. Her Emergency Management work began 40 years ago, as Senior Assistant to two state governors coordinating Fire Service, Emergency Management, Emergency Medical Services, Public Safety, and Law Enforcement. She served as the Associate FEMA Director for National Preparedness, Training, Higher Education, Exercises, and International Partnerships, and was a private sector government contractor for 12 years. She currently serves as a nonprofit leader on the Board of Advisors for DRONERESPONDERS International and for the Institute for Diversity and Inclusion in Emergency Management and is on the Advisory Board for Domestic Preparedness Journal. She has served as a graduate professor of Emergency Management at numerous universities and has been a Certified Emergency Manager for 25 years.

Guest Speakers

In order of appearance



Dr. Lucia Velotti

John Jay College of Criminal Justice CUNY

Dr. Lucia Velotti is an Assistant Professor in Emergency Management and Disaster Science at John Jay College of Criminal Justice, Department of Security, Fire and Emergency Management, City University of New York (CUNY). She has carried out several field studies across the world following multiple disasters.

She served as co-lead for the FEMA Higher Education Service-Learning and Leadership Special Interest Group (SIG) on Research and Theory in Emergency Management, and co-chair of the International Research Society on Public Management panel on Emergency Services.



Dr. Mark Landahl, CEM

City of Rockville

Dr. Mark Landahl currently serves as the Emergency Manager for the City of Rockville, Maryland. Prior to this position, he served as the Homeland Security Commander for the Frederick County (Maryland) Sheriff's Office. He serves as an adjunct professor in several programs and regularly publishes in the

fields of Emergency Management and Homeland Security, including two co-authored books. Prior to his law enforcement and Emergency Management careers, he served as a public-school history and government teacher and on a Congressional staff in the U.S. House of Representatives.



Dr. Ray Chang

Embry-Riddle Aeronautical University

Dr. Ray Chang is an Assistant Professor in the Department of Security and Emergency Services at Embry-Riddle Aeronautical University - Worldwide Campus. He is interested in bridging the gaps between practitioners and researchers, and the Emergency Management systems between the United

States and other countries. As a result, he co-leads the FEMA Higher Education Program Annual Symposium organizing team and two SIGs in the FEMA Higher Education Program to further discuss those issues relevant to international Emergency Management, theory, and research.



Dr. Shirley Feldmann-Jensen, MPH, PHN, RN

California State University Long Beach

Dr. Shirley Feldmann-Jensen is both Lecturer and Program Coordinator for the MS Program Emergency Services Administration at California State University Long Beach. Her Doctoral degree was earned in Policy, Planning and Development at the University of Southern California. She has policy expertise at

the intersection of Emergency Management and human outcomes; with a focus on foundations that advance the professionalization of Emergency Management. She is a Co-lead of the Ethics SIG and serves on JSIRE editorial board.



Dr. David McEntire, SFHEA

Utah Valley University

Dr. David McEntire, is a professor who teaches Emergency Management, Homeland Security and National Security at Utah Valley University. His expertise is in vulnerability reduction, community preparedness, response coordination, terrorism, and international disasters. He has published

several books and more than 150 articles/chapters/manuscripts.

Guest Speakers

In order of appearance



Dr. Sandy Smith, RN
Arkansas Tech University

Dr. Sandy Smith graduated with a BS in Nursing from Duke University and earned her PhD in Nursing from Loyola University Chicago. Prior to becoming the Department Head of Emergency Management, she taught at Arkansas Tech University in the departments of nursing and Emergency Management as a visiting professor. Her teaching specialties remain ethics, public health, and research. She has co-authored the *Next Generation Core Competencies for Emergency Management Professionals: Handbook of Behavioral Anchors and Key Actions for Measurements*, leads the Ethics SIG, and serves as the Assessor Manager for the Council for the Accreditation of Emergency Management and Homeland Security Education (CAEMHSE).



Dr. Paula Buchanan, MBA, MPH, CPH
Tulane University

Dr. Paula Buchanan is a disaster scientist and Emergency Management researcher. Her work lies at the intersection of public health, education, risk communication, and outreach messaging. She has professional experience in communications, university-level instruction, business continuity, and project management. A central question of her research is the extent to which socio-technical systems function as a communication channel to provide populations with accurate information to mitigate public health impacts associated with, or exacerbated by, disasters. She is also passionate about using social media, information technology, and data visualization tools to effectively communicate with targeted audiences.



Terry Cooper, MS, MPH, LSSGB, CEM
University of New Haven

Terry Cooper is a Public Health and Emergency Management professional with more than 19 years of experience in public health, forensic mental health, and Emergency Management. He is a Certified Emergency Manager, Master Exercise Practitioner, and graduate of the National Emergency Management Advanced Academy. He earned his BS in Food Science from the University of Florida, MS in Emergency Management, MPH, and is pursuing a Doctor of Health Science in Educational Leadership at the University of New Haven. He is currently a William Averette Anderson Fund (BAF) Fellow.



Brittany Giles-Jones, MPA
Clark Atlanta University

Ms. Brittany Giles-Jones has more than 15 years of professional experience working across sectors in academia, talent management, live production development, and emergency and disaster management. She currently works as an Emergency Management Consultant, and is a William Averette Anderson Fund Fellow, and Mercatus Center Frédéric Bastiat Research Fellow. She earned an MPA in Emergency and Disaster Management from the Metropolitan College of New York, and a BLS in Interdisciplinary Studies from Boston University. As a current doctoral student at Clark Atlanta University, she focuses on Disaster-Aid and Disaster-Conflict research and understanding the history of international and inner-country relations which dictate Humanitarian and Disaster Aid.

Academic Community Poster Contest

Posters will be presented on June 5 from 1–4 p.m. in S125
and displayed the rest of the week for viewing.

Faculty and student research posters will: 1) address a current Emergency Management issue, 2) be well organized, and 3) promote synergy between the academic and practitioner communities.



The **Dr. Tom Phelan Outstanding Poster Award** will be awarded to the best poster determined by the reviewers. The **People's Choice Poster Award** will be awarded to the poster that receives the most votes from attendees. Awards will be given on the morning of the last day of the Symposium. Don't forget to vote by 6 p.m. on June 6: surveymonkey.com/r/2023HiEdSymposium_Poster



Poster Contestants

- The Ethical Lens**
Andrea Adams, Dave Etkin, Austin Dalgo, Olivier Rubin, Carol Cwiak, Elite Hasson
- 2024 Solar Eclipse: Student Perceptions**
Jamie Stacy, Bethany Swindell
- Flood Risk Communication: Challenges and Opportunities**
Ekong Peters, Rejina Manandhar, Bethany Swindell
- Choice and Relocations: A Comparative Analysis of U.S. Voluntary and Mandatory Buyouts**
Elyse Zavar, Sherri Brokopp Binder, Alex Greer, Amber Breaux
- Improving Community Hurricane Resilience Through a Comprehensive Assessment of Tree Species Wind Resistance**
Allyson Salisbury, Andrew Koeser, Michael Andreu, Yujuan Chen, Zachary Freeman, Jason Miesbauer, Adriana Herrera-Montes, Chai-Shian Kua, Ryo Higashiguchi Nukina, Cara Rockwell, Shozo Shibata, Hunter Thor, Benyao Wang, Richard Hauer
- Once Upon a Tornado: Exploring Differences in Learning Outcomes Between Story and Lecture-based Tornado Preparedness Curricula**
Kathleen McCoy
- Advancing Inclusivity in Disaster and Emergency Management Pedagogy: An Interdisciplinary Case Study with Deaf and Hearing College Students**
Hayley Stokar, Dianna Bryant, Audrey Cooper, Kota Takayama
- Challenges Immigrants Face During Disasters: A Systematic Literature Review**
Yvonne Dadson
- Locating Emergency Response Facilities in the Metrorail System: A Decision Support Tool**
Elizabeth Ottinger, Alejandro Medina Mora, Kaveena Patel, Islay Van Dusen
- Resilience is Local: Translating the Complexity of Disaster Resilience with Local Leaders**
Kateryna Wowk, Margaret Adams, Emily Martinez
- Case Study in Starting a Campus CERT Program**
Alethia Raycrow-Simpson, Aniya Martin, Hannah Healy



Monday, June 5, 2023

Plenaries

8:00–9:00 AM	Symposium Registration E Building, 2 nd Floor Lobby
9:00–9:10 AM	Presentation of Colors, National Anthem, and Pledge of Allegiance Maryland State Police
9:10–9:30 AM	Facility Welcome Chief Tonya Hoover, USFA Deputy Administrator
9:30–9:40 AM	HiEd Program Welcome Kelly Fitzgerald, FEMA HiEd Program Manager
9:40–9:55 AM	Break
9:55–10:00 AM	Symposium Spotlight Montage
10:00–10:25 AM	Connecting Our Past with Our Future Through Community Impact Marcus Coleman, DHS Center for Faith-Based and Neighborhood Partnerships
10:25–10:45 AM	Break
10:45–10:55 AM	Administrator’s Introduction Dr. Jeff Stern, Emergency Management Institute Superintendent
10:55–11:25 AM	FEMA Welcome Deanne Criswell, FEMA Administrator
11:25–11:55 AM	Energy Justice and Justice40: Made for this Moment Keynote Speaker: Sheri Bone, Principal Deputy Director, Office of Economic Impact and Diversity, U.S. Department of Energy
11:55–12:00 PM	Wrap-Up Kelly Fitzgerald, FEMA HiEd Program Manager
12:00–1:00 PM	Lunch: K Building: Cafeteria
6:00–7:00 PM	Speed Networking in the Command Post Pub Steve Recca, Naval Postgraduate School Center for Homeland Defense and Security
	Symposium Academic Planning Committee Hotwash (closed session) in K302 Kelly Fitzgerald, FEMA HiEd Program Manager

Monday Breakouts, 1:00–1:50 p.m.

Developing and Enhancing Partnerships for Equitable and Inclusive Community Engagement (FEMA) – K302

To support communities through every phase of the disaster cycle, we must establish and sustain meaningful relationships with a wide range of community-based organizations, partners, and stakeholders. This is especially important for communities that have historically been excluded from EM decisions or are not part of the EM community. Listening to and learning from diverse voices and experiences leads to more innovative ideas, informed decisions, greater public support, and equitable outcomes.

Hannah Vick and Justin Knighten, DHS Office of External Affairs

Marcus Coleman, DHS Center for Faith-Based and Neighborhood Partnerships

Jessica Hubbard, Guidehouse

Student Volunteer: Natasha Edwards, University at Albany, State University of New York

What to Teach in Emergency Management: Thoughts for Those New to Teaching the Discipline (Workshop) – K308 *(Goes until 4 p.m.)*

Are you new to the disaster, EM, and HS Higher Education community? Do you desire additional knowledge about the fundamental concepts, issues, theories, debates, and literature for your courses? This workshop will trace the evolution of EM research, discuss important disaster topics and disaster case studies, and also identify significant schools of thought in EM, novel teaching techniques, and future projections in this increasingly important discipline and profession.

Dr. David McEntire, Utah Valley University

Student Volunteers: Yvette Manduhano, Vincennes University and Vegas Curry, Liberty University

U.S. Fire Administration's Research Program for the Health and Safety of the Emergency Responder (FEMA) – K318

Provides information about the United States Fire Administration's (USFA's) new and current innovative research efforts to support the EMS and Fire Service to reduce EMS responder and firefighter on-duty deaths. Discuss many studies including: ergonomics and wellness, health and safety, the National Safety Culture Change Initiative for the Fire Service project, emergency vehicle and roadway operations safety research, retention and recruitment, the America Burning reports, risk management, and grant funding for EMS and fire.

Bill Troup, USFA Fire Data and Research Center Research Branch

Student Volunteer: Aniya Martin, Elizabeth City State University

Academic Community Poster Presentations – S125

1. **The Ethical Lens** – Andrea Adams, Dave Etkin, Austin Dalgo, Olivier Rubin, Carol Cwiak, Elite Hasson
2. **2024 Solar Eclipse: Student Perceptions** – Jamie Stacy, Bethany Swindell
3. **Flood Risk Communication: Challenges and Opportunities** – Ekong Peters, Rejina Manandhar, Bethany Swindell
4. **Choice and Relocations: A Comparative Analysis of U.S. Voluntary and Mandatory Buyouts** – Elyse Zavar, Sherri Brokopp Binder, Alex Greer, Amber Breaux

**Vote for the People's Choice Poster Award by 6 p.m. on June 6: surveymonkey.com/r/2023HiEdSymposium_Poster

Forecasting a Culture of Evidence: Developing a System for Research at FEMA (FEMA) – M202

The Evidence Act of 2018 requires Federal agencies to invest in and focus on using data and evidence to make critical decisions and understand the impact of our work. In line with this prioritization, FEMA now has several new requirements to fulfill and is in the process of building out capacity to conduct evaluations and other programmatic research. Learn what the Evidence Act is, discuss priority research projects at the Agency, and discuss how FEMA is developing a system for research.

Carissa Chantiles, Office of Policy and Program Analysis

Moderator: Stephen Carter, Frederick Community College MACEM&PS

Student Volunteer: Jamela Green, Savannah State University

Monday Breakouts, 1:00–1:50 p.m. (cont.)

Meet the Authors – N Building (Goes until 2:50 p.m.)

An opportunity for authors to share recently published and revised books, white papers, research, and other course materials with the community. Participants can meet with published authors, pick up copies of free resources, and enjoy a tour of the NETC library.

Monday Breakouts, 2:00–2:50 p.m.

Inclusion of Experiential Learning Through Service and Research Community EM Related Projects (SoTL) – K302

Experiential learning is a great way to allow students to see how classroom theory translates into real-world solutions. Experiential learning has been proven to have a significant impact on the quality of student learning outcomes. Share and collaborate on different ways that students can actively engage in experiential learning in order to make them better and more productive EM professionals ready for the career market.

Dr. Kevin Kupietz, Elizabeth City State University

Student Volunteer: Jennifer Classen, Pennsylvania State University

DEI in Emergency Management: Opportunities for Practitioner, Academic, and Community Collaborations (IDEA) – K318

EM lacks representation, which hinders efforts to improve processes for all Americans. Diversity and inclusion in EM have a direct impact on the outcomes of underrepresented communities who suffer more from disasters. Representation through Emergency Managers who mirror the communities they serve can help build trust and meaningful relationships. Explore supporting EM programs at Historically Black Colleges and Universities and other Higher Education institutions with people of color to address DEI challenges.

Leslie Luke, LA County Office of Emergency Management

Dr. Paula Buchanan, Tulane University

Dr. Atyia Martin, Northeastern University/All Aces, Inc.

Student Volunteer: Brittany Giles-Jones, Clark Atlanta University

Academic Community Poster Presentations – S125

5. **Improving Community Hurricane Resilience Through a Comprehensive Assessment of Tree Species Wind Resistance** – Allyson Salisbury, Andrew Koeser, Michael Andreu, Yujuan Chen, Zachary Freeman, Jason Miesbauer, Adriana Herrera-Montes, Chai-Shian Kua, Ryo Higashiguchi Nukina, Cara Rockwell, Shozo Shibata, Hunter Thor, Benyao Wang, Richard Hauer
6. **Once Upon a Tornado: Exploring Differences in Learning Outcomes Between Story and Lecture-based Tornado Preparedness Curricula** – Kathleen McCoy
7. **Advancing Inclusivity in Disaster and Emergency Management Pedagogy: An Interdisciplinary Case Study with Deaf and Hearing College Students** – Hayley Stokar, Dianna Bryant, Audrey Cooper, Kota Takayama
8. **Challenges Immigrants Face During Disasters: A Systematic Literature Review** – Yvonne Dadson

**Vote for the People's Choice Poster Award by 6 p.m. on June 6: surveymonkey.com/r/2023HiEdSymposium_Poster

Mass Shootings: Implications for Emergency Management (Research) – M202

Examine the implications of mass shootings for local and private sector officials of twelve 2022 mass shootings and similar phenomena through the lenses of local and private sector officials in Monmouth County, New Jersey, and the roles and responsibilities of 16 Monmouth County stakeholders and their Federal and State partners in preventing, mitigating, and responding to the threat of mass shooters and related phenomena. Preliminary findings affirm that HS is very much about hometown security.

Dr. John Comiskey, Monmouth University

Student Volunteer: Emily Heard, Columbia University

Monday Breakouts, 3:00–3:50 p.m.

Building Resilience in the U.S. Health, Food, and Agriculture Systems (Research) – K302

The U.S. Department of Homeland Security's Health, Food, and Agriculture Resilience (HFAR) Directorate is collaborating with industry groups, academic institutions, and cross-governmental departments to safeguard the American food supply against catastrophic incidents. Highlight the work completed by the HFAR Engagement Sub-Team to develop tools for local EM use to identify threats, engage with partners, and build capacity and readiness in this space.

David Hogg, University of Oklahoma

Alexis Joiner, Sandia National Laboratory

Student Volunteer: Natasha Edwards, University at Albany, State University of New York

HiEd Funded Research Projects – K318

Turning Every Disaster into an Opportunity: Refugees' Perceived Emergency Management Capacity and Disaster Resilience.

Dr. Ming Xie and Dr. Li Chen, West Texas A&M University

Climate Change Database for Emergency Managers.

Dr. Angelyn Flowers and Cotina Lane Pixely, University of the District of Columbia

Required Internships in Emergency Management Higher Education: Student Reflections and Career Progressions.

Dr. Stacy Willett, University of Akron

Dr. Mark Landahl, City of Rockville

Moderator: Sarah Nix, FEMA NTED

Student Volunteer: Ryon Lee, Texas Southern University

Academic Community Poster Presentations – S125

9. **Locating Emergency Response Facilities in the Metrorail System: A Decision Support Tool** – Elizabeth Ottinger, Alejandro Medina Mora, Kaveena Patel, Islay Van Dusen

10. **Resilience is Local: Translating the Complexity of Disaster Resilience with Local Leaders** – Kateryna Wowk, Margaret Adams, Emily Martinez

11. **Case Study in Starting a Campus CERT Program** – Alethia Raycrow-Simpson, Aniya Martin, Hannah Healy

**Vote for the People's Choice Poster Award by 6 p.m. on June 6: surveymonkey.com/r/2023HiEdSymposium_Poster

Bringing Research into Practice: Integration of Cold-War Era Nuclear Bunker Research into Curriculum Development (Research) – M202

Identify a gap in EM-related lesson plan development, teaching about preparedness for the nuclear war threat. An example will be provided from graduate research in Canada regarding opportunities leading to repurposing or the barriers leading to dereliction for large-scale Cold War-era nuclear bunkers. Topics discussed will include how fallout shelters, continuity of government, and civil defense heritage can be integrated into contemporary EM curriculum.

Dr. Jack Rozdilsky and Christian Canaan, York University

Student Volunteer: Devki Shah, University of Maryland

Monday Breakouts, 4:00–4:50 p.m.

The Ethics of Scarce Resource Allocation and Prioritization: Concepts and Teaching Techniques (Panel) – K302

Explore the challenges of prioritizing scarce resources in a crisis and ways students can be taught to address resource shortages. Discuss strengths and liabilities of applicable ethical perspectives and how instructors can prepare students to evaluate a situation, act according to an appropriate ethical framework, and justify their decisions. Conclude with an open discussion about equity and inclusion in the distribution of resources during and after a disaster.

Dr. Laura Phipps, University of Texas at Arlington
Dr. Shirley Feldmann-Jensen, California State University Long Beach
Dr. Andrea Adams, University of the District of Columbia
Dr. Sandy Smith, Arkansas Tech University
David Etkin, York University
Moderator: Dr. Carol Cwiak, North Dakota State University
Student Volunteer: Jodi Ricks, University of the District of Columbia

Teaching, Tenure, and Promotion: How Can I Possibly Accomplish Everything? A Retrospective (Panel) – K308

Navigating promotion and tenure in the academic environment can be complex and challenging with the many expectations placed on faculty. Pulling from lived experiences, we will address and discuss challenges faced by many faculty when navigating through the promotion and tenure process. Each panel member is in a different part of the journey in the promotion and tenure process which will bring multiple perspectives and experiences to the conversation.

Dr. Amy Hyman and Dr. Joseph Richmond, Arkansas State University
Dr. Claire Connolly Knox, University of Central Florida
Dr. Brie Haupt, Virginia Commonwealth University

HiEd Funded Research Projects – K318

Using Historical Insights in Emergency Management and Homeland Security Education.

Dr. Oluponmile Olonilua, Texas Southern University

HBCU Needs Assessment.

Dr. Ceeon Smith, Grambling State University

Scanning the Horizon: Analyzing the Structure and Curriculum of Emergency Management Degree Programs. *(virtual)*

Joseph Simons-Rudolph, Southeastern Oklahoma State University

Moderator: Sarah Nix, FEMA NTED

Student Volunteer: Jennifer Classen, Pennsylvania State University

Research to Practice: An Inclusion, Diversity, Equity and Access Professional Practice and Teaching Tool (IDEA) – S125

Research indicates local EM and Public Health agency knowledge and experience gaps regarding successful implementation of disability-inclusive EM practices. The Prepared4ALL program fosters collaboration between local Emergency Managers, public health personnel, people with disabilities, and organizations. Share the program's learning modules and tools, include a simple workbook to guide local plan review, along with results from successful use by practicing professionals and students as part of a course curriculum.

Dr. Susan Wolf-Fordham, Association of University Centers on Disabilities
Student Volunteer: Jewel Lester, University of Maryland Federal Fellows Program

Monday Breakouts, 4:00–4:50 p.m. (cont.)

Climate Change Adaptation Strategy Identification and Community Outreach Study 2021 (Panel) – M202 (hybrid)

Climate Change represents one of the greatest crises of the 21st Century. In response to these challenges, FEMA Region 8 launched its first series of Higher Education research grants to identify climate adaptations strategies and effectively communicate preparedness practices and programs to residents of CO, MT, ND, SD, UT, WY, and the 29 federally recognized tribes within these states. A multi-part project was developed targeting a diverse range of special populations and tribes within FEMA Region 8 to gather their unique perspectives and lived experiences on climate change and adaptation efforts.

Dr. Tina Bynum, Pikes Peak State College

Arthur Simental, Colorado Technical University

Sinan Khan, LA County Office of Emergency Management

Soumanetra Ghosh, University of Denver

Moderator: Dan Green, National Preparedness Division

Student Volunteer: Sebastian Grajales Castano, Georgetown University

Meet the Authors

Held on June 5 from 1:00–2:50 p.m. in N Building, Library.

“Meet the Authors” is a great opportunity for both authors and participants to network. Have the opportunity to meet and greet with published authors, discover new and revised textbooks, pick up copies of free resources, and enjoy a tour of the NETC library.

Participating authors include: Alessandra Jerolleman, Allyson Salisbury, Atyia Martin, Bob Campbell, Brie Haupt, Charles Casto, Claire Connolly Knox, Claire Rubin, Damon Coppola, DeeDee Bennett Gayle, Diego Fernandez Otegui, Jane Bullock, Joy Semien, Kesley Richardson, Lucia Velotti, Mark Landahl, Stephen Littlewood, Sue Wolf-Fordham, and Tamara Lolley.



Academic Community Awards

Kay C. Goss
Innovation and
Technology Award
Presented By:
Dr. Sandy Smith,
Arkansas Tech
University



Dr. B. Wayne
Blanchard Award for
Academic Excellence
in Emergency Management
Higher Education
Presented By:
Dr. Caroline Hackerott,
North Dakota State
University



2023 Scholarship
of Teaching and
Learning Award
Presented By:
Dr. Claire Knox,
University of Central
Florida

Tuesday, June 6, 2023

Plenaries

8:00–9:00 AM	Symposium Registration E Building, 2 nd Floor Lobby	International Breakfast K Building, Executive Dining Room
9:00–9:10 AM	Welcome Back Charlotte Porter, FEMA NTED Director	
9:10–9:40 AM	State of the Community Dr. DeeDee Bennett Gayle, University at Albany, State University of New York	
9:40–10:00 AM	Break	
10:00–10:30 AM	Interoperable Communications: A Necessity for Ensuring Mission Success Charles Guddemi, DC Homeland Security and Emergency Management Agency	
10:30–11:00 AM	Academic Community Awards Dr. Sandy Smith (Kay Goss Award), Dr. Claire Connolly Knox (SoTL Award), Dr. Caroline Hackerott (Wayne Blanchard Award)	
11:00–11:20 AM	Break	
11:20–11:50 AM	IAEM and Higher Education: Strengthening Our Connection Guest Speaker: Cathy Clark, IAEM President/Minnesota Department of Public Safety	
11:50–12:00 PM	Wrap-Up Amanda Smith, FEMA NTED Branch Chief	
12:00–1:00 PM	Lunch: K Building: Cafeteria	
6:00–7:00 PM	Quake Heroes Movie Night and Q&A in E Auditorium Mark Blenthien, Southern California Earthquake Center, University of Southern California Mark Romano, Romascope	

Tuesday Breakouts, 1:00–1:50 p.m.

Studying Learning in Action in EMHS Education: An Interactive Workshop (SoTL) – K302

Provide a space for participants to learn and practice the interaction analysis method for studying learning in action. EMHS education scholars can expand both the literature for what learning happens in educational spaces and how that learning occurs. Participants will directly engage in a hands-on manner for understanding and discussing the potential use of interaction analysis in both their own teaching and research and EMHS education research broadly.

Jennifer Classen, Pennsylvania State University

Dr. Claire Connolly Knox, University of Central Florida

Student Volunteer: Yvette Manduhano, Vincennes University

Integrated Disaster Resource Management (IDRM): Applied Research in an Undergraduate Capstone (SoTL) – K308

Integrated Disaster Resource Management (IDRM) is an interdisciplinary approach to restore ecological integrity, promote sustainability, and protect human health in response to disasters. The presenters developed an undergraduate capstone class where student teams are given a natural resource problem or environmental issue and use an IDRM approach to assess the problem and develop either a disaster management plan or produce a scientific report. Explore the findings from three years of using this approach.

Rebecca Sutter and Chris Sheach, Paul Smith's College

Student Volunteer: Emma Sharpe, University of Maryland Federal Fellows Program

HiEd Funded Research Projects – K318

Improving Community Hurricane Resilience through a Comprehensive Assessment of Tree Species Wind Resistance.

Dr. Allyson Salisbury, University of Florida

Assessment of Diversity, Equity, and Inclusion Efforts in State and Local Emergency Management Agencies.

Dr. Arjola Balilaj and Dr. Tanveer Islam, Jacksonville State University

Framework for Prioritizing Equitable Access to Retail Supply Chain Nodes After Disasters.

Lauren Finegan, Massachusetts Institute of Technology

Moderator: Sarah Nix, FEMA NTED

Student Volunteer: Aniya Martin, Elizabeth City State University

Curriculum to Integrate the Resilience Analysis and Planning Tool (RAPT) Into Collegiate Emergency Management Courses (FEMA) – S125

Discuss the RAPT tool, the data sets that are included in the tool, and use cases highlighting the tool's versatility. Educators will be provided with sample lesson plans that show how the tool can be incorporated into foundational EM courses on planning, vulnerability and resilience, risk, and a broad range of other topics.

John Carr, Argonne National Laboratory

Moderator: Dr. Aaron Kenneston, Truckee Meadows Community College

Student Volunteer: Jacqueline Orban, University of Maryland Federal Fellows Program

Using Values to “Right Size” Disaster Risk Management (Research) – M202

A more robust resilience toolkit is needed to address the pressures climate change, pandemics, and other emergent and complex threats are placing on the social fabric. Continuing to emphasize consequence reduction and the bolstering of response capacity is leaving communities blind to many non-traditional shocks and stresses. Get a comprehensive overview of Values-Based EM and Values-Based Risk Management practices, including real-world examples of both.

Damon Coppola, Shoreline Risk LLC

Ryan Miller, George Washington University

Moderator: Joshua DeVincenzo, National Center for Disaster Preparedness, Columbia University

Student Volunteer: Sarah Meeks, Vincennes University

Tuesday Breakouts, 2:00–2:50 p.m.

What's Next for the Disaster Profession? A Survey of Opinions and Recommendations for Resilience (Research) – K302

Share findings based on qualitative research gathered from various EM officials at the local and state level in FEMA Region 8. Describe the hazards and vulnerabilities present in this part of the country along with efforts to mitigate against, prepare for, respond to, and recover from various types of disasters. Successes, challenges, and lessons learned are also mentioned to guide the future of EM.

Dr. David McEntire, Utah Valley University

Student Volunteer: Yvette Manduhano, Vincennes University

Disaster Resilience: Centering Social Resilience for an Effective Emergency Management Ecosystem (IDEA) – K308

Pre-existing social inequities and injustices are at the root of these poor climate-related and disaster outcomes. We still struggle in EM to intentionally incorporate these realities into disaster resilience. Explore a resilience prioritization framework that synthesizes decades of research insights into the interconnected nature of social, infrastructure, economic, environmental, and governance resilience to share opportunities to center people for thriving communities before, during, and after disasters.

Dr. Atyia Martin, Northeastern University/All Aces, Inc.

Student Volunteer: Emma Sharpe, University of Maryland Federal Fellows Program

Research Method Guide for Emergency Management Practitioners (HiEd Research) – K318

Develop a disaster research method guideline to facilitate the integration of transdisciplinary (practitioners, academics, and citizens) research studies to identify and solve complex problems. This project is also designed to offer guidance to HS and EM students and to reduce the gap between academics and practitioners.

Dr. Lucia Velotti, John Jay College of Criminal Justice CUNY

Student Volunteer: Brittany Giles-Jones, Clark Atlanta University

Utilizing Social Science Research to Understand and Equip Emergency Managers for Extreme Weather Planning and Operations (Research) – S125

Researchers at the University of Oklahoma have been fielding a longitudinal survey effort of U.S. adults and of EM professionals designed to foster a better understanding of how weather forecasts are accessed, understood, and applied. Explore how survey data has been used by forecasters and researchers affiliated with the National Weather Service and potential opportunities for this data to influence training, education, and operational planning for Emergency Managers.

David Hogg, University of Oklahoma

Student Volunteer: Jamela Green, Savannah State University

Inclusion, Diversity, Equity, and Access: Emergency Management Scholars Standing in the Gap (IDEA) – M202

The EM practitioner community has been increasingly sought after to stand in the gap between vulnerable population groups, their needs, and local, state, and Federal resources. This places a growing demand for EM scholars to improve their understanding of risk, vulnerability, and social behaviors. The EM community focuses on the practice of prevention, preparedness, mitigation, response, and recovery. We can incorporate inclusivity in planning through diversity of thought, equity within the workforce, and effective and equitable service to the public at all stages – a call to action for scholars to incorporate IDEA initiatives throughout implementing, evaluating, and advancing critical actions.

Kathy Francis and Diana Culp, Frederick Community College MACEM&PS

Student Volunteer: Jodi Ricks, University of the District of Columbia

Tuesday Breakouts, 3:00–3:50 p.m.

Creating an Immersive Learning Environment for Emergency Responders (SoTL) – K302

Augmented, mixed, and virtual reality are no longer novel concepts in society and are becoming more commonplace with every passing day. However, widespread adoption of immersive learning to prepare for disasters has yet to be embraced on a large scale. Recognize and break down the barriers to immersive technologies, and explore the current landscape of immersive learning including the strengths, weaknesses, and barriers towards its adoption into training models for emergency responders.

James Burgess, International Association of Fire Fighters

Student Volunteer: Yvonne Dadson, University at Albany, State University of New York

Meaningful and Authentic Assessments in the Higher Education Classroom (SoTL) – K308

Explore the Inquiry-Based and Problem-Based Learning models through the lens of adult learning theory and consider ways of developing meaningful and authentic assessments that align with these designs. Instructors will examine their assessment practices to identify strengths and weaknesses and consider options to move toward reliable and valid assessments appropriate for Higher Education classrooms, and consider the increased use of low stakes, scaffolded formative assessments.

Joseph Rafter, Frederick Community College MACEM&PS

Student Volunteer: Alethia Raycrow-Simpson, Elizabeth City State University

Beyond Representation: Emergency Managers and Their Role in Disaster Law (IDEA) – K318

Delve into the legal issues surrounding disasters, and discuss how to bridge the gap between EM and law schools. By promoting greater collaboration and communication between these two groups, we can better anticipate and address the legal challenges that arise in the wake of disasters. Gain valuable insights for EM professionals, lawyers, and anyone interested in developing more effective disaster response strategies.

Latisha Nixon-Jones, Mercer University School of Law

Student Volunteer: Sarah Meeks, Vincennes University

Disaster Risk Assessment: How Emergency Management Organizations Miscalculate Risk (Research) – S125

A review of the risk equations used by EM organizations reveals that the professional EM community has a broad and deep misunderstanding of the nature of disaster risk and how to calculate it. These misunderstandings result in an ethical disconnect between disaster risk calculations and the vulnerability paradigm, relative risk calculations that are distorted, and a general underestimation of risk.

David Etkin, York University

Student Volunteer: Matthew Van, University of Delaware

The Disaster Judge: An Expansive Approach to Building Disaster Resiliency Through Law School and Legal Practice (Research) – M202

Everyone jokes about lawyers until you need them to do something in a hurry and under pressure. But how much time do you spend hoping that your lawyer is ready for a disaster, and then how much time do you spend trying to explain to them what EM is? Discuss a three-channeled approach to building resiliency within the legal profession to: better support our communities across all phases of EM; and preserve access to justice for our society at a time that could make or break a community for decades to come.

William Gribble, Texas A&M University School of Law

Student Volunteer: Jewel Lester, University of Maryland Federal Fellows Program

Tuesday Breakouts, 4:00–4:50 p.m.

From Student to Intern: Understanding the University Side and the FEMA Office of the National Advisory Council (ONAC) Internship Innovation (Panel) – K302

Explore strategies to set up and work with student interns from the university perspective, and an alternative approach through the ONAC. Noting the troubled alignment that traditional internship arrangements have with meeting student needs, the ONAC has built an alternative opportunity through Federal student volunteering authorities. Gain advice and lessons learned from managing EM interns for more than 20 years as an academic department and for more than 3 years with ONAC in innovating an outcome-driven university – Federal agency collaboration, and learn how to create your own similar partnerships.

Rob Long, FEMA Office of the National Advisory Council

Dr. Stacy Willett, University of Akron

Student Volunteer: Alethia Raycrow-Simpson, Elizabeth City State University

Publishing Research in Academic Journals and Books: Advice and Strategies for Success (Panel) – K308

Featured journal editors, associate editors, and reviewers will provide valuable insight into the publishing process of academic journal articles. Listen to experiences, success stories, and challenges, and engage in questions from audience members. This session is open to anyone interested in publishing articles, but especially doctoral students and junior faculty.

Dr. Claire Connolly Knox, University of Central Florida

Dr. John Comiskey, Monmouth University

Damon Coppola, Shoreline Risk LLC

Dr. Brie Haupt, Virginia Commonwealth University

Student Volunteer: Yvonne Dadson, University at Albany, State University of New York

Service-Learning for Disaster Resilience. Partnerships for Social Good (Panel) – K318 (hybrid)

Discuss the definition(s) of service-learning and customer based service-learning, together with challenges and benefits encountered or expected to encounter. Debunk myths and create new knowledge to understand where everybody stands. Understand the barriers that people encounter in adopting service-learning pedagogy.

Dr. Lucia Velotti, John Jay College of Criminal Justice CUNY

Dr. Thomas Carey, Monmouth University

Dr. Kevin Kupietz, Elizabeth City State University

Dr. Lane Perry, Western Carolina State University

Aaron Marshall, Response Division (Region 4)

Student Volunteer: Hilary Betley, University of Maryland Baltimore County

The Profession of Emergency Management Around the World (Panel) – S125

Discuss how EM, as a discipline, can be applied to other countries and how private sectors, governmental agencies, and non-governmental organizations in different countries utilize EM principles and concepts to manage disasters.

Dr. Ray Chang, Embry-Riddle Aeronautical University

Chris Sheach, Paul Smith's College

Moderator: Dr. Laura Phipps, University of Texas at Arlington

Student Volunteer: Hannah Healy, Elizabeth City State University

Creating a Successful University/FEMA Regional Relationship: An Open Listening Session (FEMA) – M202

Join FEMA Regions 1, 8, 9 and the Naval Postgraduate School's Center for Homeland Defense and Security in a facilitated listening session to identify paths to success for joint Higher Education/FEMA collaboration on the Regional level.

Gregory D'Ercole, Community Preparedness Branch (Region 1)

Dan Green, National Preparedness Division (Region 8)

Sally Ziolkowski, National Preparedness Division (Region 9)

Steve Recca, Naval Postgraduate School Center for Homeland Defense and Security

Student Volunteer: Sophia Taur, University of Maryland

Wednesday, June 7, 2023

Plenaries

8:00–9:00 AM	Symposium Registration E Building, 2 nd Floor Lobby
9:00–9:15 AM	Final Day Remarks Traci Silas, Executive Director, DHS Office of Academic Engagement
9:15–10:05 AM	Community Impact Panel Dr. Kay Goss, World Disaster Management LLC Dr. DeeDee Bennett Gayle, University at Albany, State University of New York Dr. Lucia Velotti, John Jay College of Criminal Justice CUNY Dr. Mark Landahl, City of Rockville Dr. Ray Chang, Embry-Riddle Aeronautical University Dr. Shirley Feldmann-Jensen, California State University Long Beach Moderator: Dr. David McEntire, Utah Valley University
10:05–10:20 AM	Break
10:20–10:30 AM	Academic Community Poster Contest Awards
10:30–10:55 AM	Code of Ethics and Professional Standards of Conduct for Emergency Management Professionals Dr. Sandy Smith, Arkansas Tech University Dr. Shirley Feldmann-Jensen, California State University Long Beach
10:55–11:40 AM	From Practitioner to Scholar: Building a Stronger Foundation with a PhD (ScD) in Emergency Management Dr. Paula Buchanan, Tulane University Terry Cooper, University of New Haven Brittany Giles-Jones, Clark Atlanta University Moderator: Dr. Ray Chang, Embry-Riddle Aeronautical University
11:40–11:50 PM	Closing Remarks Kelly Fitzgerald, FEMA HiEd Program Manager
12:00–1:00 PM	Lunch: K Building: Cafeteria
6:00–7:00 PM	Karaoke Night in the Command Post Pub

Wednesday Events

Gettysburg Tour (12–5 p.m.)

Take a guided tour of the grounds of the Gettysburg Battlefield from an Emergency Management perspective. Lead by a Civil War expert, guests will be guided between several important locations across the battlefield. Bagged lunches will be provided by the cafeteria for a picnic lunch. Sign-ups will be made on a first come, first serve basis. For more information about Gettysburg, visit the Gettysburg Museum and Visitor Center website: gettysburgfoundation.org

Joe Goldsberry, NETC

Antonio Chester and Michael Belfer, FEMA NTED



HiEd Regional Meetup (FEMA) – K302 (1–4 p.m.)

(closed session)

The goal is to strengthen FEMA Regional and HiEd Program collaboration that ultimately enhances the Agency’s partnership with academia and national resilience through innovative research. The purpose of the workshop is to learn from each other and define a path forward for ongoing collaboration.

Kelly Fitzgerald, FEMA HiEd Program Manager

Evaluations

Please fill out [daily evaluations](#) for each session you have attended using the QR code.

Expect to receive an email on Friday with an [overall Symposium evaluation](#) survey.

All feedback is greatly appreciated!

surveymonkey.com/r/2023HiEdSymposium_Daily



SIG Meetings, 5:00–5:30 p.m.



June 5, 2023

International EM SIG

Room K302

Dr. Ray Chang,
Embry-Riddle Aeronautical
University

Dr. Laura Phipps,
University of Texas
at Arlington

June 6, 2023

**Council for the Accreditation
of EM&HS Education
(CAEMHSE)**

Room K308

Dr. Larry Porter,
CAEMHSE

June 5, 2023

**Collaboration, Connection,
and Commitment to 2-Year
Programs SIG**

Room K314

Diana Culp,
Frederick Community
College MACEM&PS

June 6, 2023

Theory and Research SIG

Room K318

Dr. Ray Chang,
Embry-Riddle Aeronautical
University

Dr. Lucia Velotti,
John Jay College of
Criminal Justice CUNY

June 5, 2023

**SoTL and
Jobs and Internships SIGs**

Room K308

Dr. Caroline Hackerott,
North Dakota State University

Dr. Mark Landahl,
City of Rockville
Dr. Stacy Willett,
University of Akron

June 5, 2023

**Unity of Effort: Education
Standards, Accreditation,
and Collaboration SIG**

Room K315

Dr. Larry Porter,
CAEMHSE
Dr. Romeo Lavarias,
City of Miramar

June 6, 2023

**HBCUs, MSIs, and
TCUs SIG**

Room K315

Dr. Oluponmile Olonilua,
Texas Southern University

June 5, 2023

Region 6 Collective

Room K318

Dr. Oluponmile Olonilua,
Texas Southern University

June 6, 2023

Ethics in EM SIG

Room K302

Dr. Shirley Feldmann-Jensen,
California State University
Long Beach

Dr. Sandy Smith,
Arkansas Tech University

See the full listing of SIGs
on the HiEd website:
[training.fema.gov/hiedu/
specialinterest/sig.aspx](https://training.fema.gov/hiedu/specialinterest/sig.aspx)

Anyone interested
in joining a SIG should
reach out to the associated
SIG lead(s) on the website.

Community Spotlight

Congratulations to our community's 2023 Doctoral candidates!



Anthony Rios
University of Central Florida
Defunding Law Enforcement: Fire Department's Perspective on Implementing the National Fire Protection Association 3000 Standard When Preparing for an Active Shooter Mass Casualty Incident



Farah Nibbs
University of Delaware
Developing an Adaptive Framework to Manage Natural Hazard Risks to Road Infrastructure Using A DAOO-Light Model. A Case Study of Caribbean Small Island Developing States.



Balakrishnan Balachandran
University of Illinois at Urbana Champaign
Risk Vs. Risk: Planning and Risk Management in Disaster-Induced Displacement and Relocation



Hunter LaCroix
St. John's University
Raising the Cyber Guard: Analyzing the Cost and Use of The National Guard in Local Municipal and State Cyber Defense



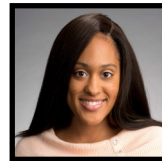
Brian O'Neill
Oklahoma State University
Structure Fire Response Under Active Threat: A Critical Analysis of Urban Fire Service Strategies in South Texas



Jongeun You
University of Colorado Denver
Three Examinations of Current Public Affairs Issues: Land and Water Integration, Water Cybersecurity, and COVID-19



Caroline Williams
University of Delaware
Regional Hurricane Risk Modeling: Incorporating a Dynamic Building Inventory Model



Joy Semien
Texas A&M University
Examining Disaster Impacts and Recovery of Small Businesses and Nonprofit Organizations Along the Texas and Louisiana Gulf Coast



Charles Salvo
Marywood University
Stress Levels Amongst Home Health Care Workers Following the COVID-19 Omicron Variant



Logan Gerber-Chavez
University of Delaware
Conceptualizing Compound Disasters and Environmental Justice: Improving Disaster Planning for Compound Disaster Event

Community Spotlight (cont.)

Congratulations to our community's 2023 Doctoral candidates!



Michael Michaud
University of Delaware
Who's Voice is Heard? Stakeholder Participation in Crisis Decision-Making Teams in Higher Education Institutions During COVID-19



Ratna Okhai
University of Central Florida
Interorganizational Networks and Coordination in Emergency Management: Policy and Practice in Response to Disasters



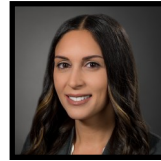
Nafiseh Solemani
University of Delaware
Earthquake Risk to Civil Infrastructure Systems



Rebecca Entress
University of Central Florida
Social Equity through Vaccinations during COVID-19: A Study of Equitable Utilization of Resources during Emergencies and Crises



Narad Pokhrel
Marywood University
Ongoing Effects of Pre-migration Traumas on the Mental Health of Bhutanese Refugees in the United States: A Qualitative Inquiry



Rosemary McDonnell
St. John's University
An Examination of the Sufficiency of Emergency Planning in New York City Hospitals for Vulnerable Populations Needing Communication or Language Assistance



Paula Buchanan
Jacksonville State University
Communication Matters: A Study of Communication Between Emergency Managers and Water Systems Professionals Regarding Insufficient Access to Drinking Water



Tracie Washington
Southern University Law Center
A Survey and Analysis of Legal Issues Post FEMA Recovery Efforts in Katrina and Ida



Rachel Slotter
University of Delaware
Addressing the Holy Grail of Emergency Management: A Study of Faith-Based Organizational Coordination Following Hurricane Florence



View all [Symposium materials](#) on the HiEd website:
<https://training.fema.gov/hiedu/educonference23.aspx>